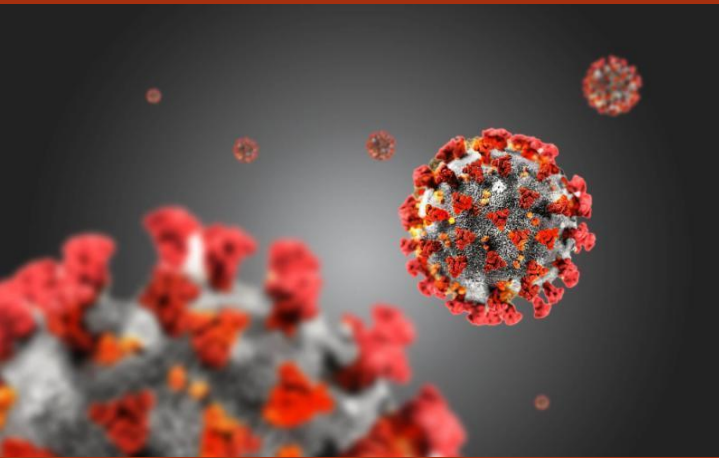


City Airport

MH Manchester
Heliport

Getting Flight Ready

Guidance and advice for our pilots and operators



The logo for City Airport, featuring the words "City Airport" in a red serif font, with a red swoosh above the text.The logo for Manchester Heliport, featuring a large black "MH" monogram followed by the words "Manchester Heliport" in a black sans-serif font.

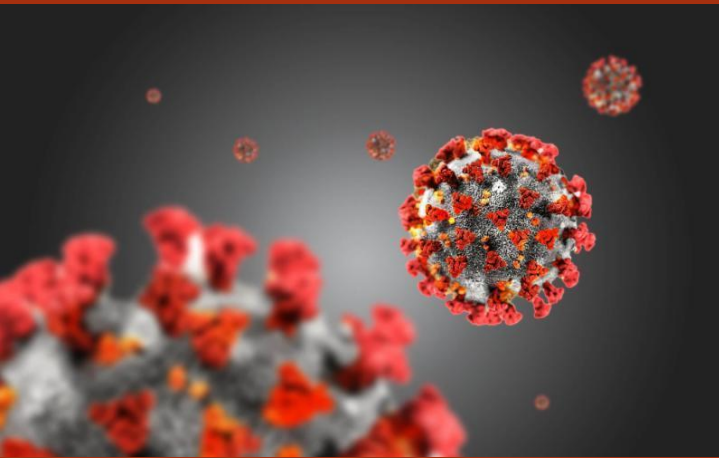
Getting Flight Ready

This guide explains the policies and procedures that are being implemented at City Airport | Manchester Heliport to enable a smooth transition as we return to flying.

There will be several changes and limitations to how we will operate. When reopening the airport, we have to consider not only the needs of our customers, but also the safety of staff, and the financial impact on the business.

All businesses must comply with the Government “COVID-Secure” guidelines, which include keeping staff numbers to the absolute minimum, and adapting the workplace and procedures to facilitate social distancing. Finally, there is a significant cost associated with opening the airport, and initially our income will remain reduced, especially while flight training remains prohibited.

These measures represent a cautious approach, following best practice and are aimed at all pilots using the facilities.



The logo for City Airport, featuring the text "City Airport" in a red serif font, with a red swoosh above the word "City".

City Airport

The logo for Manchester Heliport, featuring the letters "MH" in a large, bold, black sans-serif font, followed by the words "Manchester Heliport" in a smaller, black sans-serif font.

Manchester
Heliport

Phased return to flying

We have worked on a phased return to flying activity, in consultation with the CAA and other regulatory bodies.

Phase 1 – Partial opening

Limited flying activity with reduced opening days and hours and minimal staffing. All activity pre-booked. Site closed to public.

Phase 2 – Extended opening

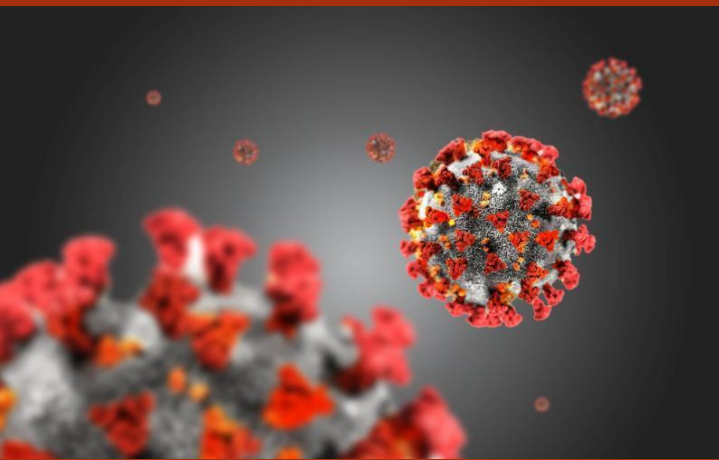
Extended opening days and hours with slightly increased staffing. All activity pre-booked. Site closed to public.

Phase 3 – Return of Flying School activities

Additional activity by flying schools. Site may open to public depending on Government advice.

Phase 4 – Near normal activities

At this stage we anticipate the majority of flying activities can take place. There may still be some reduced opening hours and days, driven by demand.



The logo for City Airport, featuring the text "City Airport" in a red serif font, with a red swoosh above the word "City".

City Airport

The logo for Manchester Heliport, featuring the letters "MH" in a large, bold, black sans-serif font, followed by the words "Manchester Heliport" in a smaller, black sans-serif font.

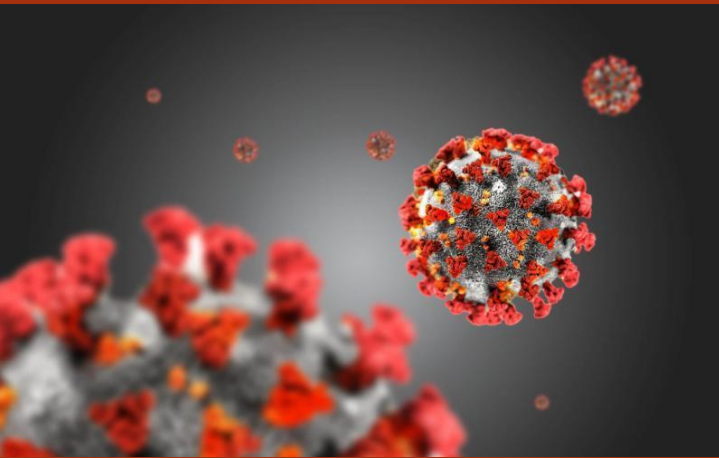
MH Manchester
Heliport

Visiting the Airport and Heliport



Self responsibility

We ask that no persons visit City Airport | Manchester Heliport if you have any signs of COVID-19 symptoms, or have been in contact with anyone else who does.



The logo for City Airport, featuring the words "City Airport" in a red serif font with a red swoosh above the text.The logo for Manchester Heliport, featuring a large black "MH" monogram followed by the words "Manchester Heliport" in a black sans-serif font.

Visiting the Airport and Heliport

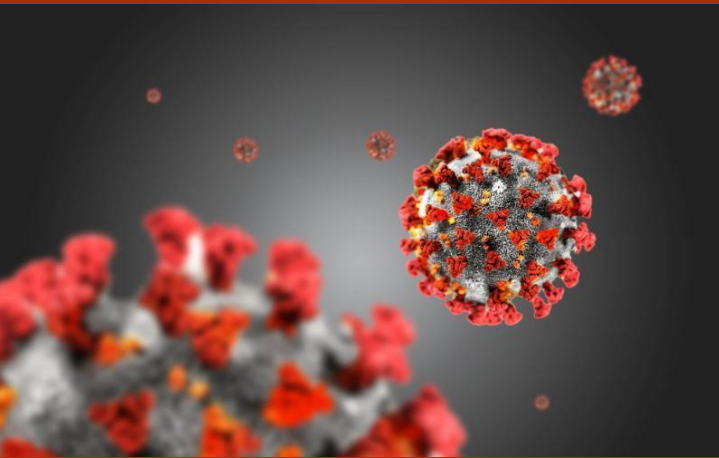


Outdoor spaces

The Airport provides plenty of space to allow for social distancing to be in place. All our outdoor seating areas are well spaced out allowing the facilities to be enjoyed.

Please respect 2 Meter social distancing when moving around the site.

Our Runway26 Café remains closed at this time.



The logo for City Airport, featuring the text "City Airport" in a red serif font, with a red swoosh above the word "City".The logo for Manchester Heliport, featuring the letters "MH" in a large, bold, black sans-serif font, followed by the words "Manchester Heliport" in a smaller, black sans-serif font.

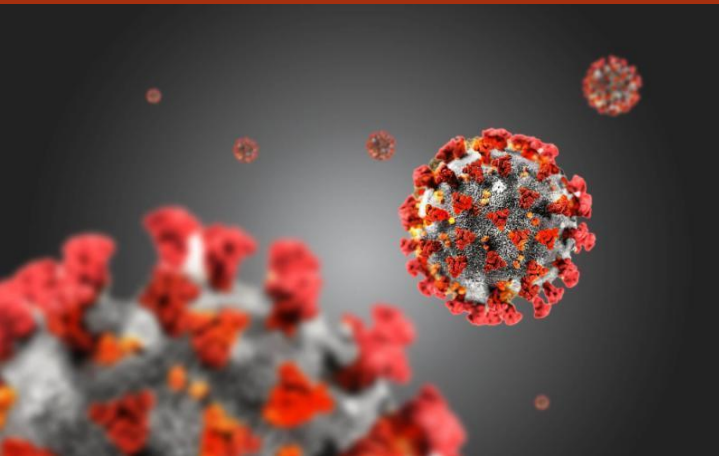
Visiting the Airport and Heliport



Use of toilet facilities and general hygiene

Please note that the public toilets on site are presently closed.

Use hand sanitiser stations where available. We recommend all pilots carry their own sanitiser with them for use as they move around the site.



The logo for City Airport, featuring the text "City Airport" in a red serif font, with a red swoosh above the word "City".The logo for Manchester Heliport, featuring a large black "MH" monogram followed by the text "Manchester Heliport" in a black sans-serif font.

Airside Access



We will only be allowing airside access to flight crew or operational staff directly involved with aircraft and flights.

We anticipate the airfield may be busier than normal with a larger number of pilots requiring to fly to regain currency.

Please respect social distancing whilst airside.

Please note there is strictly no admittance to the Tower Reception, Fuel/RFFS Annex or Tower. If you require assistance, please telephone 0161 789 1362 and choose 'Ops'.

The logo for City Airport, featuring the text "City Airport" in a red serif font, with a red swoosh above the word "City".The logo for Manchester Heliport, featuring the letters "MH" in a large, bold, black sans-serif font, followed by the words "Manchester Heliport" in a smaller, black sans-serif font.

Aircraft Fuelling



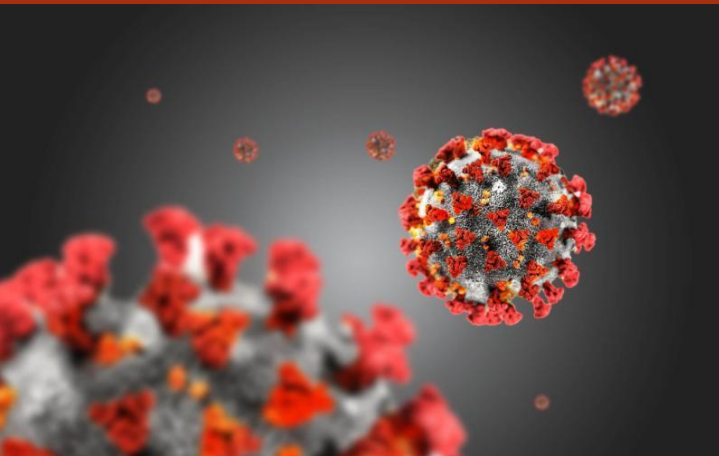
Avgas

All fuelling will be self-service.

When using the Self Service Fuel Pumps, consider the safety of yourself and others.

Wash your hands before and after using the pumps and the pay station.

Use disposable gloves when handling the fuel equipment and dispose in the bins provided after use.



The logo for City Airport, featuring the text "City Airport" in a red serif font, with a red swoosh above the word "City".The logo for Manchester Heliport, featuring the letters "MH" in a large, bold, black sans-serif font, followed by the words "Manchester Heliport" in a smaller, black sans-serif font.

Aircraft Fuelling



Jet A1

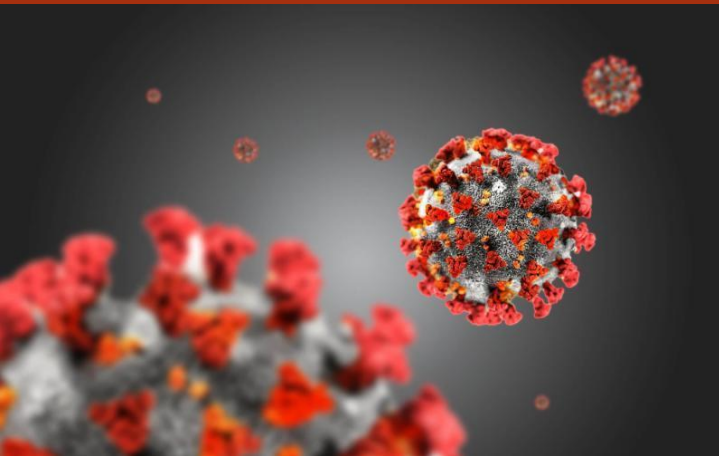
Pilots must remove fuel caps.

The fueller will then dispense the fuel.

Do not touch any elements of the fuel installation or equipment.

After fuelling, pilots must replace fuel caps.

You do not need to sign the fuel docket but verbally confirm the correct amount and your name to the fueller.



The logo for City Airport, featuring the text "City Airport" in a red serif font with a red swoosh above it.The logo for Manchester Heliport, featuring the letters "MH" in a large, bold, black sans-serif font, followed by the words "Manchester Heliport" in a smaller, black sans-serif font.

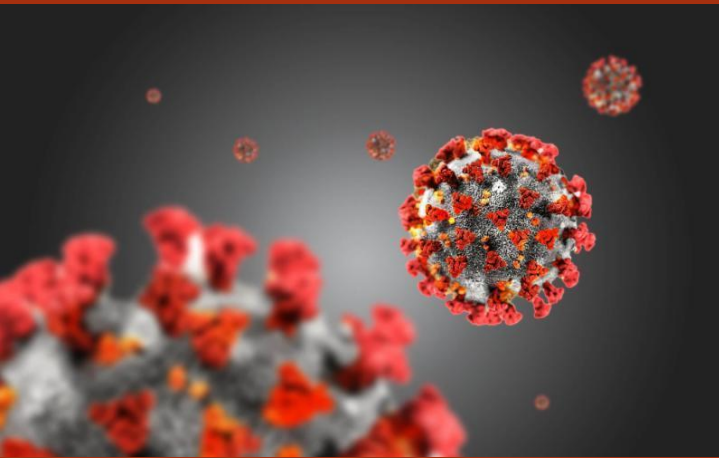
Request a Flying Slot



In order that we can manage the number of aircraft and people on site at any time, we are initially using a slot system for all departures.

To book your slot, please visit www.cityairportandheliport.com/slot

As activity levels out, we will aim to reduce this requirement as appropriate.



The logo for City Airport, featuring the text "City Airport" in a red serif font with a red swoosh above it.The logo for Manchester Heliport, featuring the letters "MH" in a large, bold, black sans-serif font, followed by the words "Manchester Heliport" in a smaller, black sans-serif font.

Booking In/Out and Landing Fees



Our Airport Reception will be closed and the Tower is closed to all visitors.

There is no requirement to 'book out/book in' as we will already have your details from the slot booking.

Obtain the ATIS by visiting

www.cityairportandheliport.com/atis

After landing, if you need to **pay your landing fee**, please call us on 0161 789 1362 and choose 'Operations' to pay by card over the phone.

The logo for City Airport, featuring the text "City Airport" in a red serif font with a red swoosh above it.The logo for Manchester Heliport, featuring the letters "MH" in a large, bold, black sans-serif font, followed by the words "Manchester Heliport" in a smaller, black sans-serif font.

Risks to consider

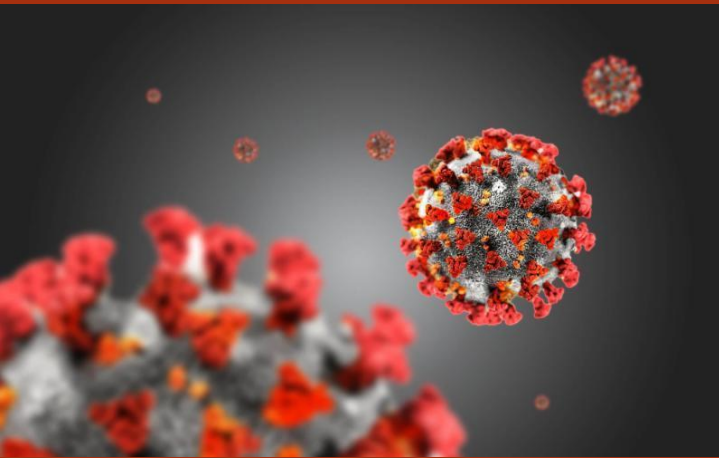


Many of us may not have flown for a number of weeks or even months. This presents various additional risks which should be considered in relation to skill fade and lack of currency.

Whilst most competent pilots will have no issues with handling the aircraft, all tasks associated with flying should also be undertaken to the same degree of care as previously.

Consider all aspects of your flight in terms of threat and error management.

Make sure your licence and medical remain valid – utilising the various exceptions and extensions provided by the Civil Aviation Authority.



The logo for City Airport, featuring the text "City Airport" in a red serif font with a red swoosh above it.The logo for Manchester Heliport, featuring the letters "MH" in a large, bold, black sans-serif font, followed by the words "Manchester Heliport" in a smaller, black sans-serif font.

Risks to consider



Flight preparation

Take time to **plan** your flight, **check** NOTAMS carefully, **know** your frequencies, **brief** weather conditions and **prepare** for all eventualities

What has changed – be aware of recent changes.

In our local area these include:



Manchester Low Level Route changes

www.nats-uk.ead-it.com/aip/current/misc/BRIEFING_SHEET_MANCHESTER_LOW_LEVEL.pdf



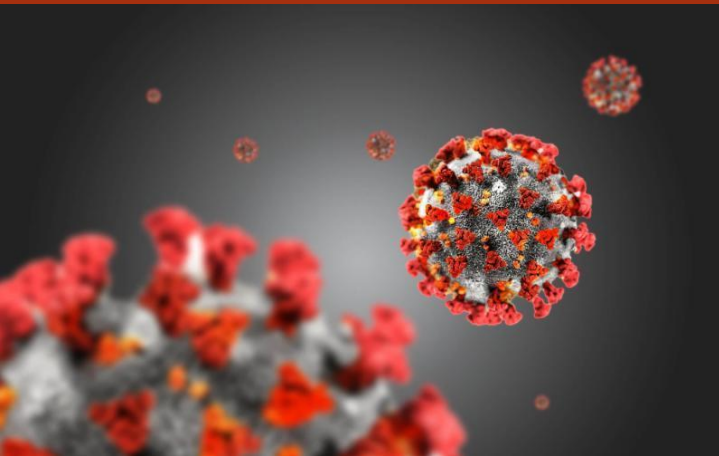
Overhead Join height

Fixed Winged overhead joins are now at 1500ft QFE. Circuit Height remains 1000ft QFE



VRP changes

Removal of Haydock. Addition of Wigan Lakes and Winter Hill Mast (From 21st May)

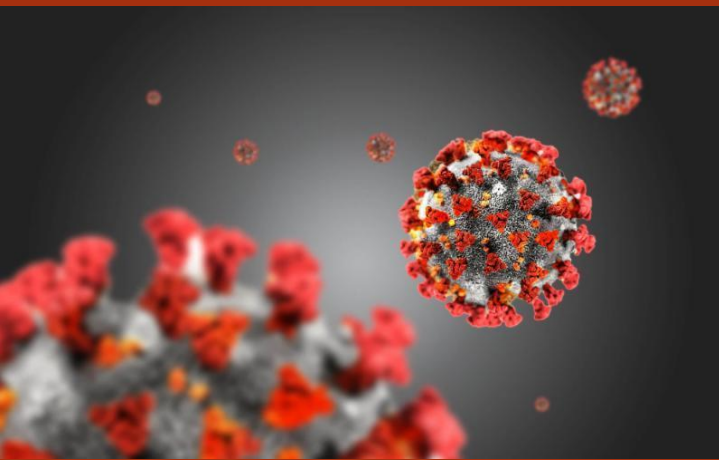


The logo for City Airport, featuring the text "City Airport" in a red serif font with a red swoosh above it.The logo for Manchester Heliport, featuring the letters "MH" in a large, bold, black sans-serif font, followed by the words "Manchester Heliport" in a smaller, black sans-serif font.

Risks to consider

Aircraft preparation

- Take time to check your aircraft, use checklists and avoid distractions.
- Consider whether existing fuel within the tank remains suitable for use. Check carefully for water and sediment.
- If you require purchase of Oil, please call us on 0161 789 1362 and choose Operations and we will arrange this for you.



The logo for City Airport, featuring the text "City Airport" in a red serif font, with a red swoosh above the word "City".The logo for Manchester Heliport, featuring a large black "MH" monogram followed by the text "Manchester Heliport" in a black sans-serif font.

Useful Links



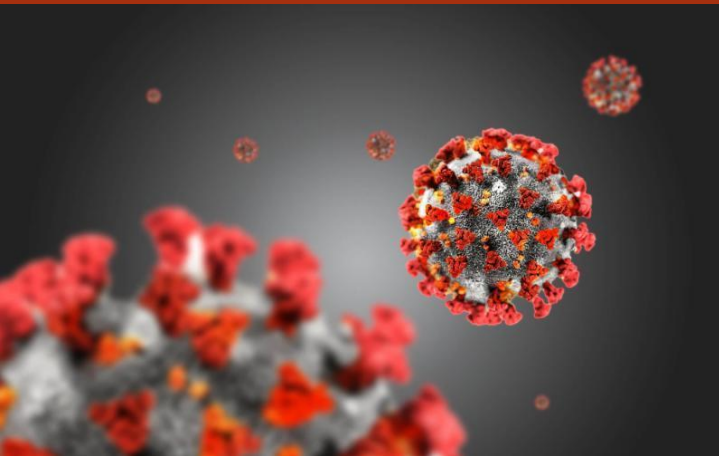
Additional information with helpful guidance on returning to flying has been published by various sources. Here are a number of them.

<https://www.bmaa.org/after-covid-19>

<https://www.gasco.org.uk/returntoflighting.html>

<https://publicapps.caa.co.uk/docs/33/CAP%201919%20GA%20return%20to%20service%20safety%20checklist.pdf>

Further information and details about flying slot bookings can be found at www.cityairportandheliport.com/covid19



City Airport

MH Manchester
Heliport

Thank
You!

By doing your bit you can help make our
return to flying safe and enjoyable for all.

